



## TRADITIONAL IMPORTS IN CONTAINERS

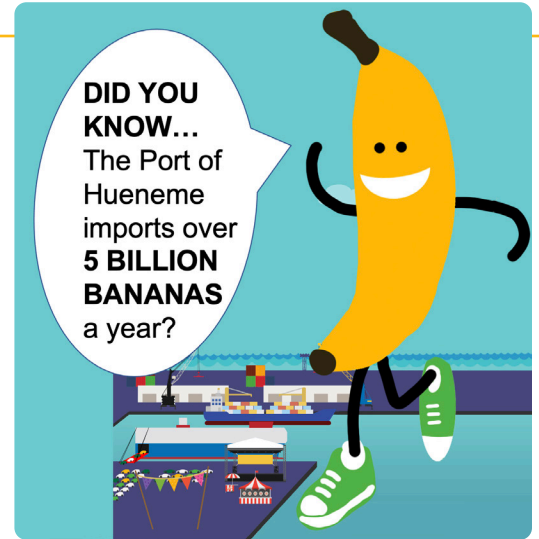
Bananas · Plantains · Pineapples · Avocados · Fruits and vegetables  
Melons · Mangos · Blueberries

## NEW CARGO IMPORTS IN CONTAINERS

Apparel · Garments · Machines · Equipment · Musical Instruments  
Frozen fish · Frozen meat · Electronics · Furniture



**92%** YEAR TO DATE     **123%** MID YEAR FY2022



## TRADITIONAL EXPORTS IN CONTAINERS\*

Fresh Fruit · Apples · Pears · Stone fruit · Frozen potatoes  
Dried milk · Frozen food products · Used cars · Toys · Waste paper · Other general cargo

*\* does not include empty containers*



**142%** YEAR TO DATE     **200%** MID YEAR FY2022

## TEUS (Calendar Year)

2020 TEU	Jan	Feb	Mar	Apr	May	Jun	Jul	Aug	Sep	Oct	Nov	Dec
INBOUND FULL	4,890	5,085	4,005	4,002	2,712	2,431	5,482	2,778	3,197	4,829	5,276	4,591
OUTBOUND FULL	1,222	1,271	1,001	1,000	678	607	1,370	694	799	1,207	1,318	1,147
<b>FULL TOTAL</b>	<b>6,112</b>	<b>6,356</b>	<b>5,006</b>	<b>5,002</b>	<b>3,390</b>	<b>3,038</b>	<b>6,852</b>	<b>3,472</b>	<b>3,996</b>	<b>6,036</b>	<b>6,594</b>	<b>5,738</b>
EMPTY	10,376	9,568	11,410	11,524	9,214	8,850	7,674	7,198	8,106	7,160	7,076	9,664
2021 TEU	Jan	Feb	Mar	Apr	May	Jun	Jul	Aug	Sep	Oct	Nov	Dec
INBOUND FULL	6,224	7,005	6,352	8,975	8,210	7,876	8,828	8,084	10,210	10,176	9,882	11,070
OUTBOUND FULL	1,582	1,751	1,588	2,243	2,052	1,968	1,784	2,966	4,376	4,134	3,836	2,516
<b>FULL TOTAL</b>	<b>7,806</b>	<b>8,756</b>	<b>7,940</b>	<b>11,218</b>	<b>10,262</b>	<b>9,844</b>	<b>10,612</b>	<b>11,050</b>	<b>14,586</b>	<b>14,310</b>	<b>13,718</b>	<b>13,586</b>
EMPTY	8,516	10,022	9,164	9,044	7,072	6,964	6,618	5,454	5,264	5,666	5,870	6,844

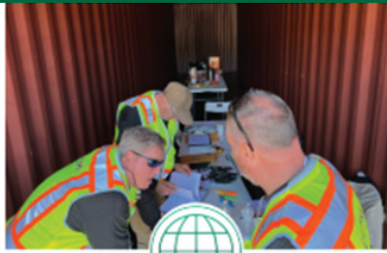
**NOTE:** A TEU is a term the maritime industry uses for quantifying container volumes. There are 20-foot containers that go on international ocean carriers, but usually international shipping containers are 40 feet. A good rule of thumb - Divide the TEU number in half and you get the number of containers. A 2,500 TEU ships carries approximately 1,250 containers. This is a typical size vessel for the Port of Hueneme.



# The Port OF Hueneme



**Priority berthing in Port Hueneme & Port Hueneme**  
Ship is not waiting at anchor to berth  
Bypass West Coast congestion  
25-day transit time



**Proven On Time Delivery**  
No Demurrage or Detention Charges  
All oversized 53' Containers  
Dedicated Team of Professionals



**Eliminate Chassis & Trucking issues**  
Truckers & chassis pre-assigned to each container  
Zero Destination Stacking or Sorting of Containers  
Turn-key Trans-Pacific Solution



WORLD TRADE CENTER  
OXNARD

Foreign Trade Zone #205



portofh.org